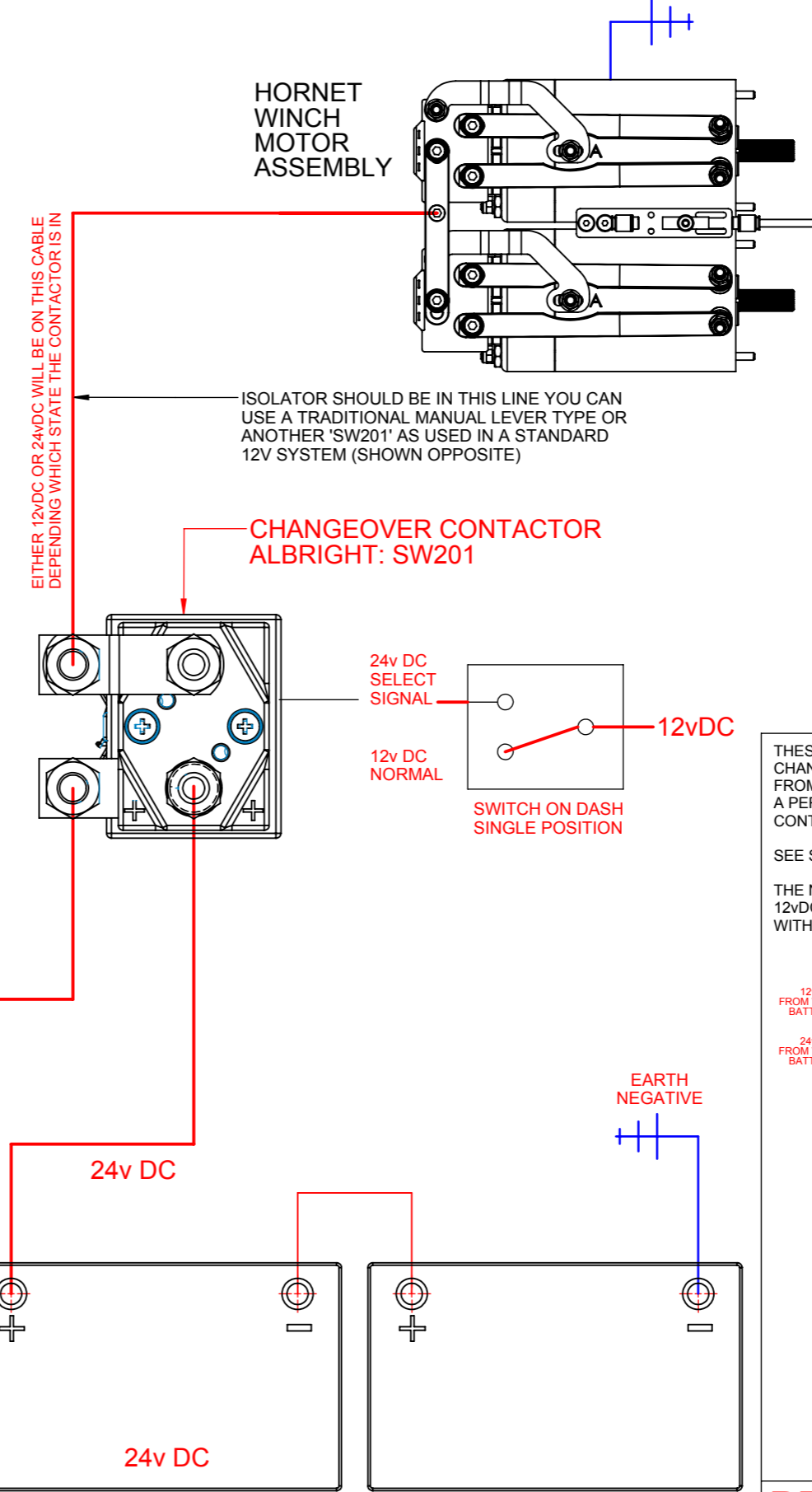
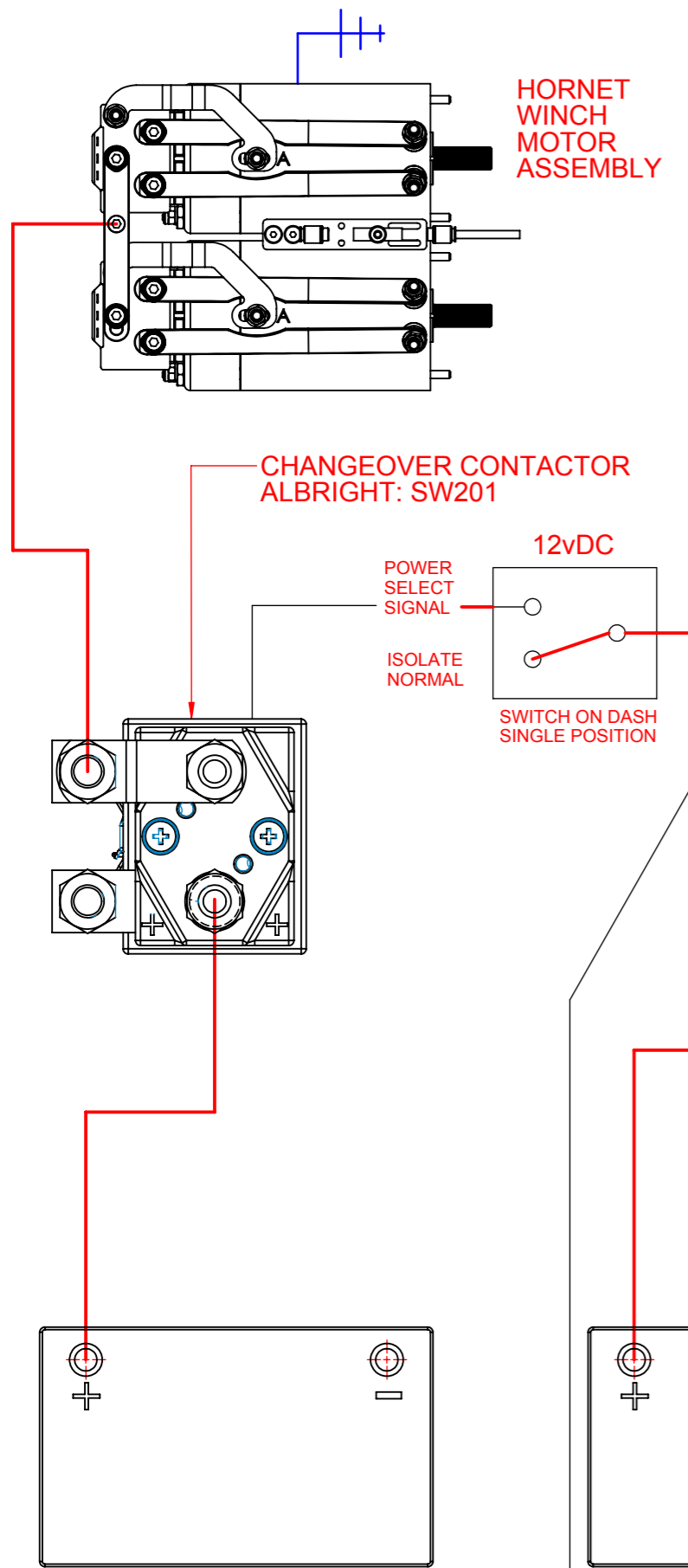


# 12vDC WINCH SETUP

# 24 & 12vDC WINCH SETUP

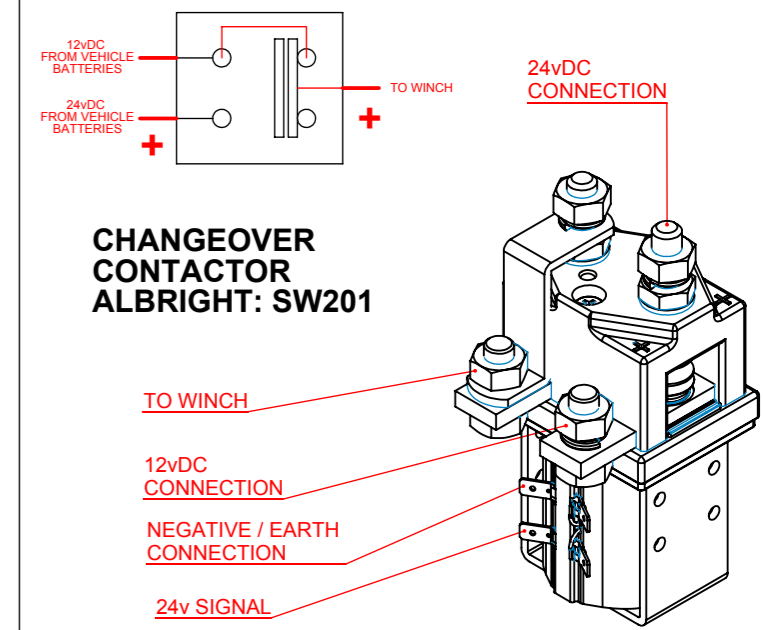
REV.	DATE	DESCRIPTION	ISSUED SIG
A	01/08/2013	FIRST ISSUE	NJ



THESE ALBRIGHT SWITCHES ARE NORMALLY CLOSED AND CHANGE STATE BY PROVIDING A PERMANENT 12V SIGNAL FROM YOUR VEHICLE. A PERMANENT 12VDC SIGNAL IS NEEDED TO KEEP THE CONTACTOR IN THE DESIRED STATE.

SEE SHEET 2 FOR THE ALBRIGHT SPECIFICATION.

THE NORMAL CLOSED CONTACT MUST BE WIRED FOR THE 12VDC SUPPLY FROM YOUR VEHICLE OR NOT CONNECTED WITH POWER DEPENDING ON THE SYSTEM YOU INSTALL.



**WINCH TYPE** **HORNET, TWIN TOP**

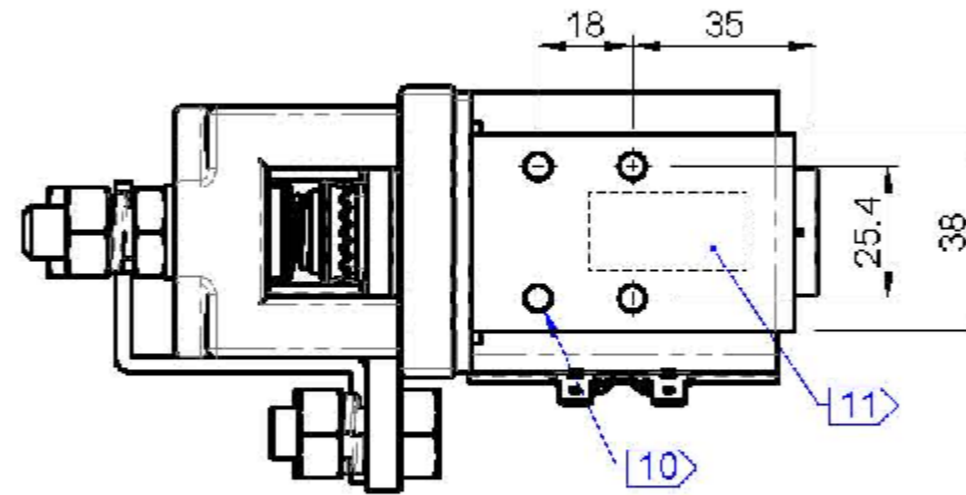
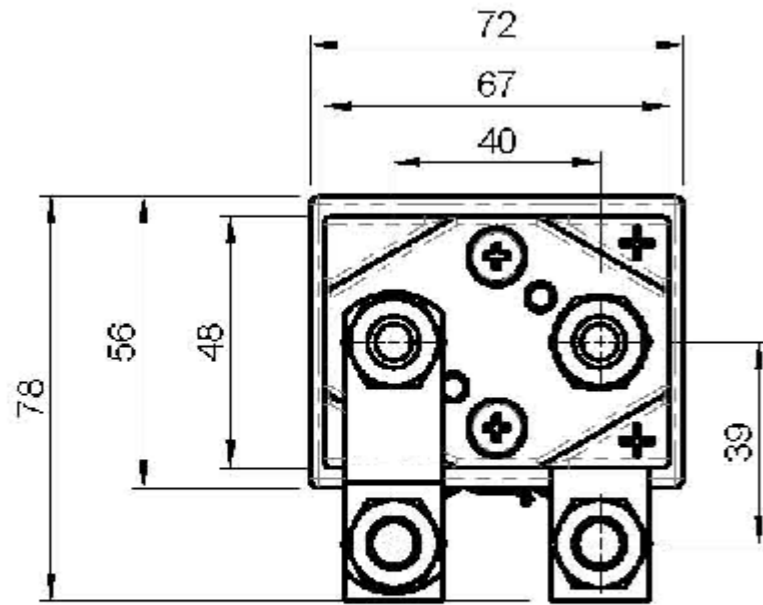
**WINCH DESCRIPTION:** **TWIN MOTOR, WIRING WITH A 12vDC SOLENOID CONTACTOR**

Telephone: +44 (0)1460 67744  
Email: sales@red-winches.com

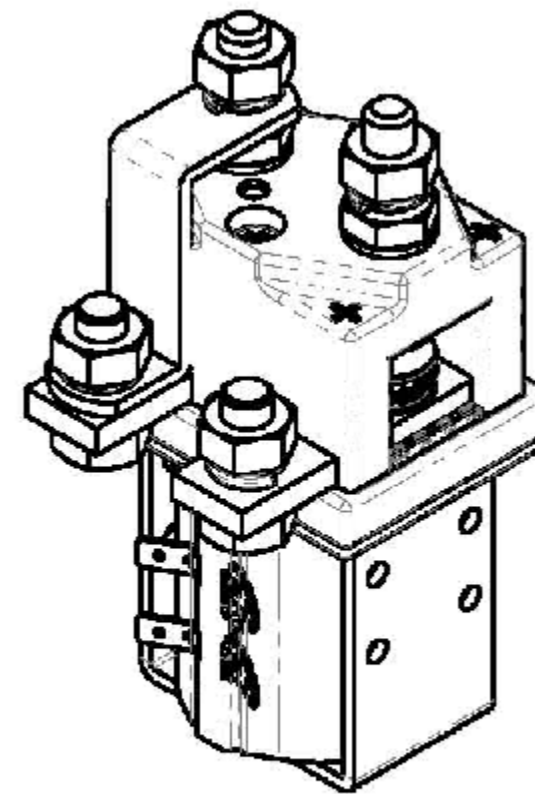
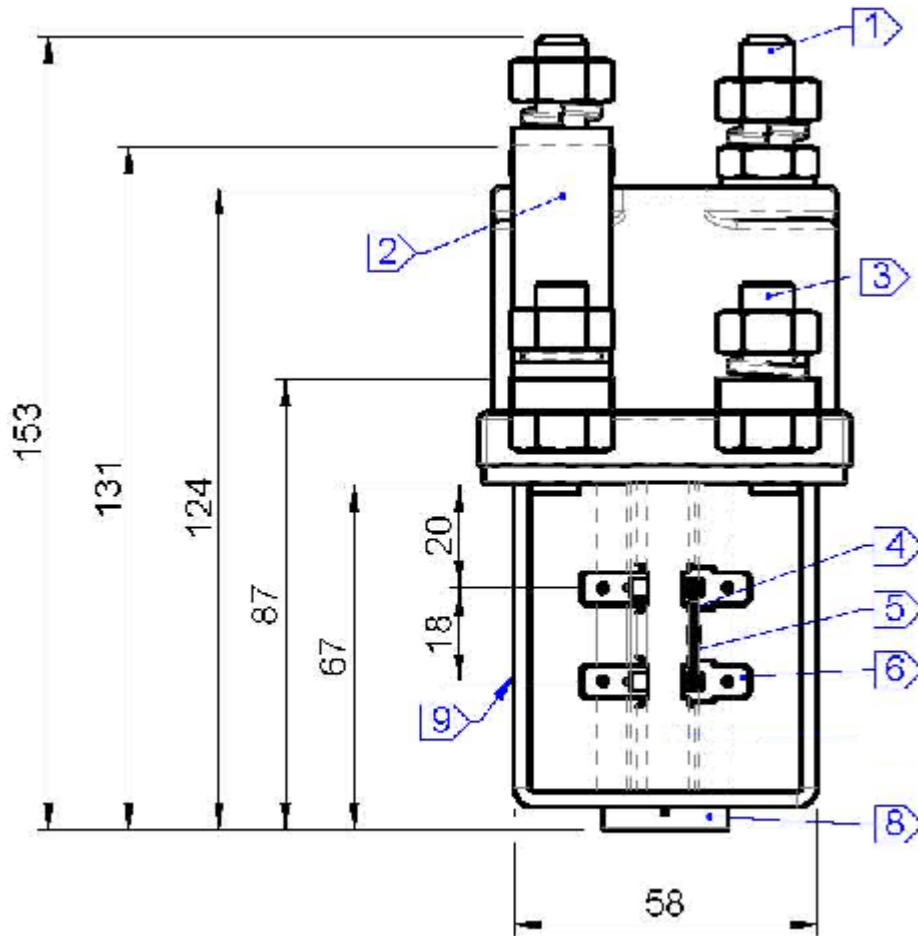
**RED Winches** [www.red-winches.com](http://www.red-winches.com)  
ULTIMATE PERFORMANCE WINCH

DRAWING NUMBER: **CONTACTOR LAYOUT** SCALE: N/A REVISION: **A** SHT 1 OF 2

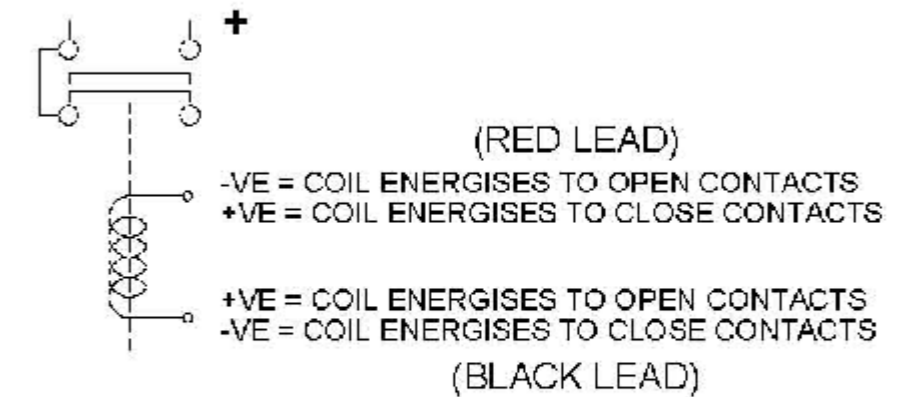
Drawing not to be reproduced or distributed in any format or method without specific permission from Redstart/Design.



- 1 M10 MAIN TERMINALS TO BE TIGHTENED WITHIN RANGE 13.4 - 14.6Nm
- 2 CRANKED LINK FITTED HERE
- 3 M10 NORMALLY CLOSED CONTACT TO BE TIGHTENED WITHIN RANGE 13.4 - 14.6Nm
- 4 RED COIL LEAD
- 5 BLACK COIL LEAD
- 6 6.3mm SPADE TERMINALS FOR COIL CONNECTIONS



- 8 ARMATURE CAP FITTED
- 9 SWITCH IDENTITY LABEL FITTED HERE
- 10 M5 MOUNTING HOLES (8 OFF, 4 PER SIDE)
- 11 YELLOW WARNING LABEL FITTED HERE



ELECTRICAL SCHEMATIC

SW211 362M	12V DC	1.00	5.0V max	5.0V max		
SWITCH TYPE	VOLTAGE	COIL RESISTANCE	PULL IN VOLTS	RELEASE VOLTS	RESISTOR TO 25W	CODE

DATA AT 20 DEGREE CELSIUS

**RED Winches** [www.red-winch.com](http://www.red-winch.com)  
 ULTIMATE PERFORMANCE WINCH

DRAWING NUMBER: **CONTACTOR DETAILS** SCALE: **1:2** REVISION: **A** SHT 2 OF 2

Drawing not to be reproduced or distributed in any format or method without specific permission from Redstart/Design.

WINCH TYPE

**HORNET**

WINCH DESCRIPTION:

**TWIN MOTOR, WIRING WITH A 12vDC SOLENOID CONTACTOR**

Telephone: +44 (0)1460 67744  
 Email: sales@red-winch.com